

Superior[®]

HEARTH, SPAS & LEISURE

www.SuperioratHome.com

SPA COVER ORDER FORM

1457 Meriden-Waterbury Rd, Rte. 322 • Southington, CT
 (860) 620-555 • Toll Free: (888) 996-3427 • Fax (860) 620-6699
 353 West Main Street, Rte. 44 • Avon, CT
 (860) 677-2304 • Toll Free: (888) 772-7288 • Fax (860) 677-2094

CUSTOMER'S NAME _____

ADDRESS _____

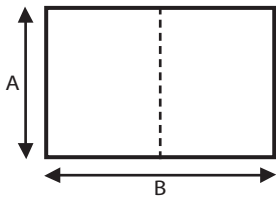
CITY, STATE, ZIP _____

PHONE _____ CONTACT _____

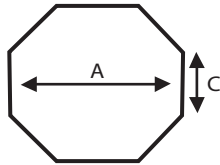
PO# _____ DATE _____

Spa cover dimensions must be in inches. Measure the widest points for the outside length and width. Indicate which side is folded in half on the diagram below. The "customer" is responsible for all dimensions. Please call us if you need help measuring the spa.

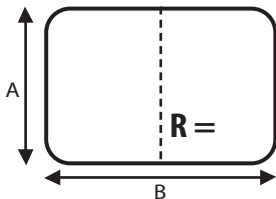
Rectangle / Square



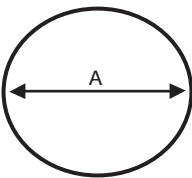
Octagon



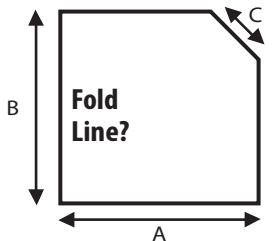
Radius Corners



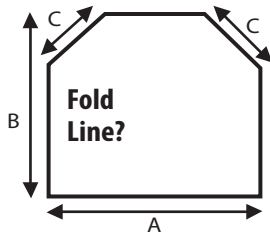
Circle



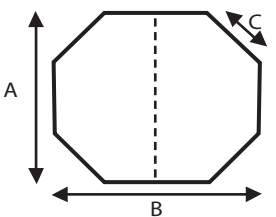
One Cut Corner



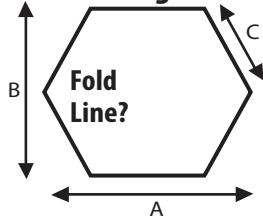
2 Cut Corners



4 Cut Corners



Hexagon



Spa Cover Type

- () 2"-4" Taper - Standard
- () 3"-5" Taper - Upgrade
- () Sumo Safety Walk-on
- () 3 Piece Cover
- () Quad Cover (4 Pieces of Foam)
- () Other _____

Outside Dimensions in Inches

Length (B) _____

Width (A) _____

Please Double Check Corners

- () Square - 90 Degrees
- () Radius _____
- () Cut Corner (C) _____

Skirt/Flap Size

- () Standard 4"
- () Other _____

Straps with Locks

- () 2 Straps
- () 4 Straps
- () Other _____
- () No Straps

Make & Model of Spa

Full Length Insulated Hinge

- () Yes - Upgrade
- () No

Double Wrap Inner Plastic?

- () Yes - Upgrade
- () No

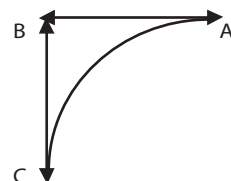
18 COLORS - Check Selection

- ALMOND
- TAN
- TAUPE
- BURGUNDY
- BROWN
- REDWOOD
- SPICE
- COFFEE
- TROPICAL BLUE
- INDIGO
- NAVY BLUE
- LIGHT GRAY
- GRANITE
- CHARCOAL
- BLACK
- TEAL
- FOREST GREEN
- WHITE

Radius Corners

- 1) Use two rulers to extend the sides of your spa to a point where the sides would have met (Point B) if the corner had been square.
- 2) Points A & C are where the curve ends on the spa.
- 3) The radius is the distance in inches from "B to A" or "B to C" whichever is SMALLER.

OR - Trace the outside curve and fax it to us.



I authorize the cover to be made to these specifications.

Customer's Signature _____

Date _____

Please Note: Spa covers are special order and non-returnable.